

MISSION/VISION

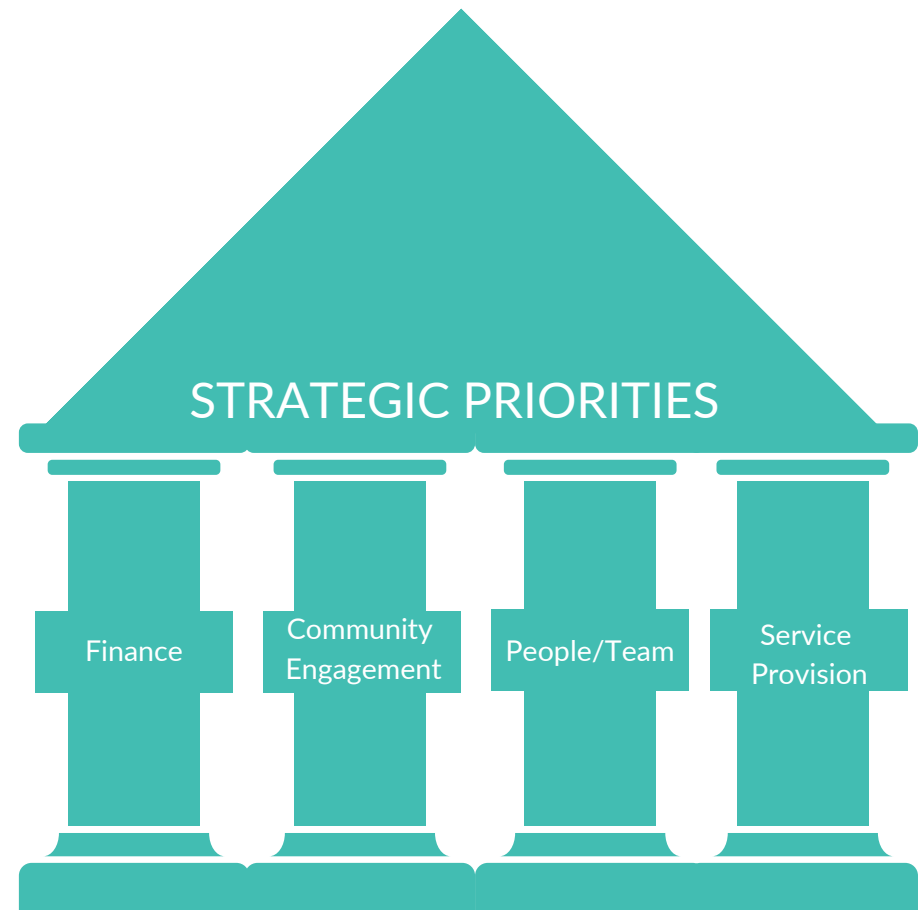
To provide the Southwest Victorian Community with excellence in respite and end-of-life care within a home-like environment, embracing respect and compassion for all people.

PURPOSE

- Provide home-like residential accommodation for short-term overnight respite, day stay and end-of-life care.
- Provide in home respite care for people with a life-limiting illness.
- Provide the Southwest Victorian Community with choice in their options for respite and end-of-life care.
- Provide information and advice, volunteer support and other services such as complementary therapy.
- Provide a valuable community resource centre regarding the primacy of the palliative care journey.

GOVERNANCE

- Anam Cara Colac is committed to delivering its purpose through strong and accountable governance. The diversity of the Committee of Management, executive team, clinical staff and volunteers reflects our community; their skill and dedication delivers person-centred care in a home-like environment that celebrates the notion of soul and whole person care (physical, emotional, social and spiritual).



ANAM CARA COLAC STRATEGIC PLAN 2023-2026

FINANCE

GOAL

Maintain and grow a consistent, dependable stream of income to secure expansion of service and Anam Cara Colac's future.

PRIORITIES

- Philanthropic Trusts
- Government
- Community members with capacity to give.
- Grant applications.
- Developing stronger communications and connections with community and stakeholders.
- Reviewing opportunities for revenue growth – such as delivery of bereavement counselling and system-navigation services for fee.

MEASURES

- Appoint a dedicated grant writer by end 2023.
- Increase the value of successful Grant applications by 10% annually.
- Increase the value of philanthropic donations by 10% annually.
- Complete a business case assessment of opportunities for income-producing services aligned to our skills, and potential funding sources.

COMMUNITY ENGAGEMENT

GOAL

Enhanced connections with the Southwest community for the benefit of guests and carers and the long-term future of Anam Cara Colac.

PRIORITIES

- Enhanced Communications materials and platforms.
- Enhanced community Consultation.
- Increase support to carers and providers to educate about palliative care options.

MEASURES

- Review and assess the Community Engagement Strategy
- Survey community awareness and approval
- Develop interest group/diverse community committees.

SERVICE PROVISION

GOAL

Offering services to the Southwest Community that provide improved end-of-life experience and choice of care options in home, day stay and residential.

PRIORITIES

- Grow our capacity for overnight stay episodes to meet community needs.
- Grow our capacity to deliver home respite care service to meet community needs.

MEASURES

- Target of 1000 episodes of overnight care, with annual adjustment to reflect community need. Day Respite to aim to achieve 600 attendances for the year.
- Implement a 24-hour call line.
- Build capacity for transporting guests.

PEOPLE/TEAM

GOAL

Enable the Anam Cara Colac team to meet the Team Charter and promote a positive and successful organisational culture. Continue to develop a strong, representative Committee of Management..

PRIORITIES

- Training for team members to develop individual skills, both clinical and guest experience.
- Workforce planning to ensure capacity and succession.
- Attention to membership of Committee of Management, composition, skills and development.

MEASURES

- Develop Workforce plan.
- Review skills and capacity for enhancing guest experience.
- Complete skills matrix review of Committee of Management, add two new members who address any gaps in skills and attributes.